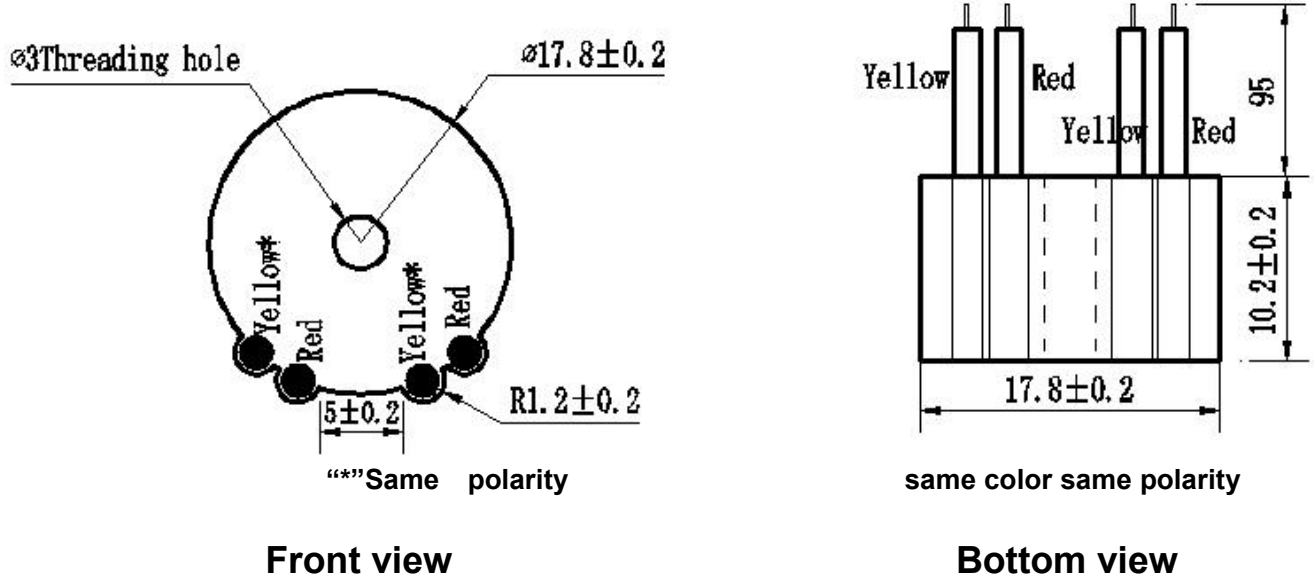


# ZMPT104F

## Current-type voltage transformer

Small size, high accuracy, good consistency, for voltage and power measurement

### Structural parameters:



### The main technical parameters:

Model	ZMPT104F
Rated input current	2mA
Rated output current	2mA
turns ratio	1000:1000
phase angle error	$\leq 45'$ (input 2mA, sampling resistor $50\Omega$ )
linear range	0~1000V 0~6mA (sampling resistor $50\Omega$ )
linearity	$\leq 0.2\%$ (20%~120%)
Permissible error	$-0.6\% \leq f \leq 0\%$ (input 2mA, sampling resistor $50\Omega$ )
isolation voltage	3000V
application	voltage and power measurement
Encapsulation	Epoxy
installation	Output leads installation (conventional lead length shown in drawing)
operating temperature	$-40^{\circ}\text{C} \sim +85^{\circ}\text{C}$

Direction for use:

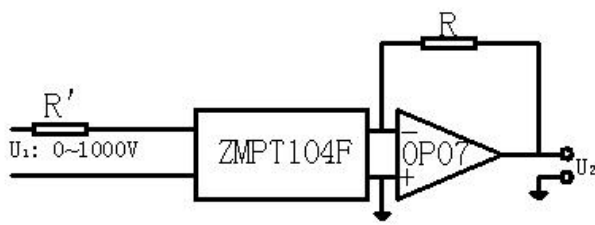


Figure I

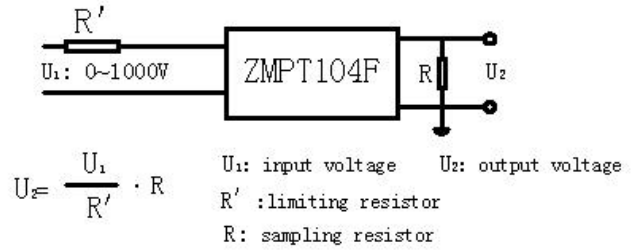


Figure II

1. The typical usage of the product is for the active output (Figure I).  $R'$  is a limiting resistor,  $R$  is a sampling resistor.
2. The product can be directly through the resistance sampling, easy to use (Figure II).