

ZMKD21-61WBS Series Hall Current Sensor

Hall current sensor uses Hall effect principle to measure DC, AC, pulse and various irregular waveform currents under the condition that the original and secondary sides are completely isolated.



RoHS



Feature

- Hall effect measurement principle
- Meet UL94-V0 standard

Advantage

- Easy to install
- Low power consumption
- Wide measuring range
- High precision and good linearity
- Low temperature drift
- Strong anti-interference ability
- Strong overload capability

Application

- Power plant
- metallurgical automation
- Intelligent buildings
- Communication base station
- Substation

Performance parameter

Electrical parameters

Rated current rms	I _{pn}	50A	100A	200A	300A	400A	600A
Measuring range	I _{pm}	100A	200A	400A	600A	800A	1200A
Rated output @I _p	V _o	(5*I _p /I _{pn}) V					
@I _p =0		0V					
Load Resistance	R _L	>10KΩ					
Supply Voltage	U _c	+24V					
Current consumption	I _c	≤25mA					
Insulation voltage	V _d	2.5kVAC/50Hz/1min					

Dynamic parameter

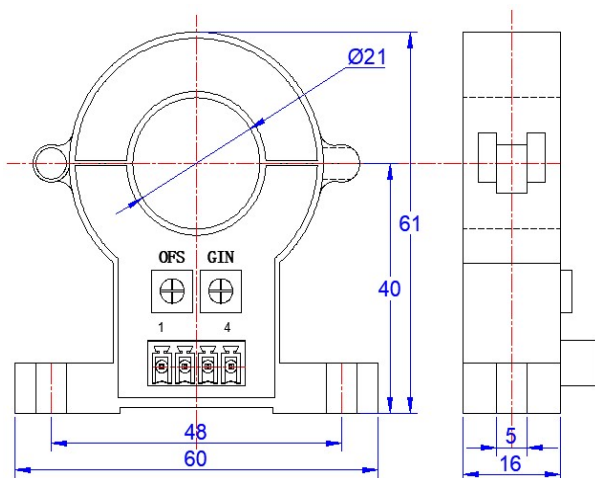
Precision (@I _{pn} , T _a =25°C)	X _G	<±1.0%					
Linearity (@T _a =25°C)	E _r	<±1.0%FS					
Zero offset voltage (@T _a =25°C, I _p =0)	V _{0E}	<+40mV					
Magnetic offset voltage(I _{pn} >0)	V _{0H}	<+20mV					
Zero temperature drift	TCV _{0E}	<±1.0mV/°C					
Response time	T _r	<20ms					
Frequency bandwidth (@-3dB)	BW	DC~1kHz					

General parameters

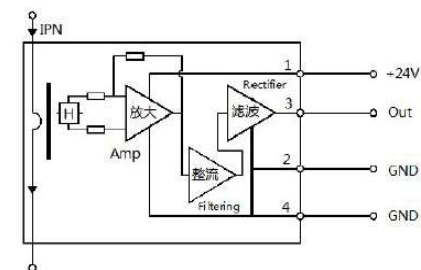
Ambient operating temperature	T _a	-40~+85°C					
Ambient storage temperature	T _s	-55~+125°C					
Weight	m	70g					
Case material		PBT G30/G15 UL94-V0					
		EN50178:1998					
Executive standard		IEC60950-1:2001					
		SJ20790-2000					

structure

Unit: mm



Instructions



1. The direction of the current should be the same as the direction of the arrow of the casing;
2. Please refer to the wiring definition on the physical shell, the wrong wiring will damage the module;
3. In order to obtain better dynamic characteristics and sensitivity, it is recommended to use a single turn wire and the wire fills the module through the wire hole best;
4. The primary side wire temperature should not exceed 100 °C;
5. The above parameters are standard specifications, and the products can be customized according to customer needs.