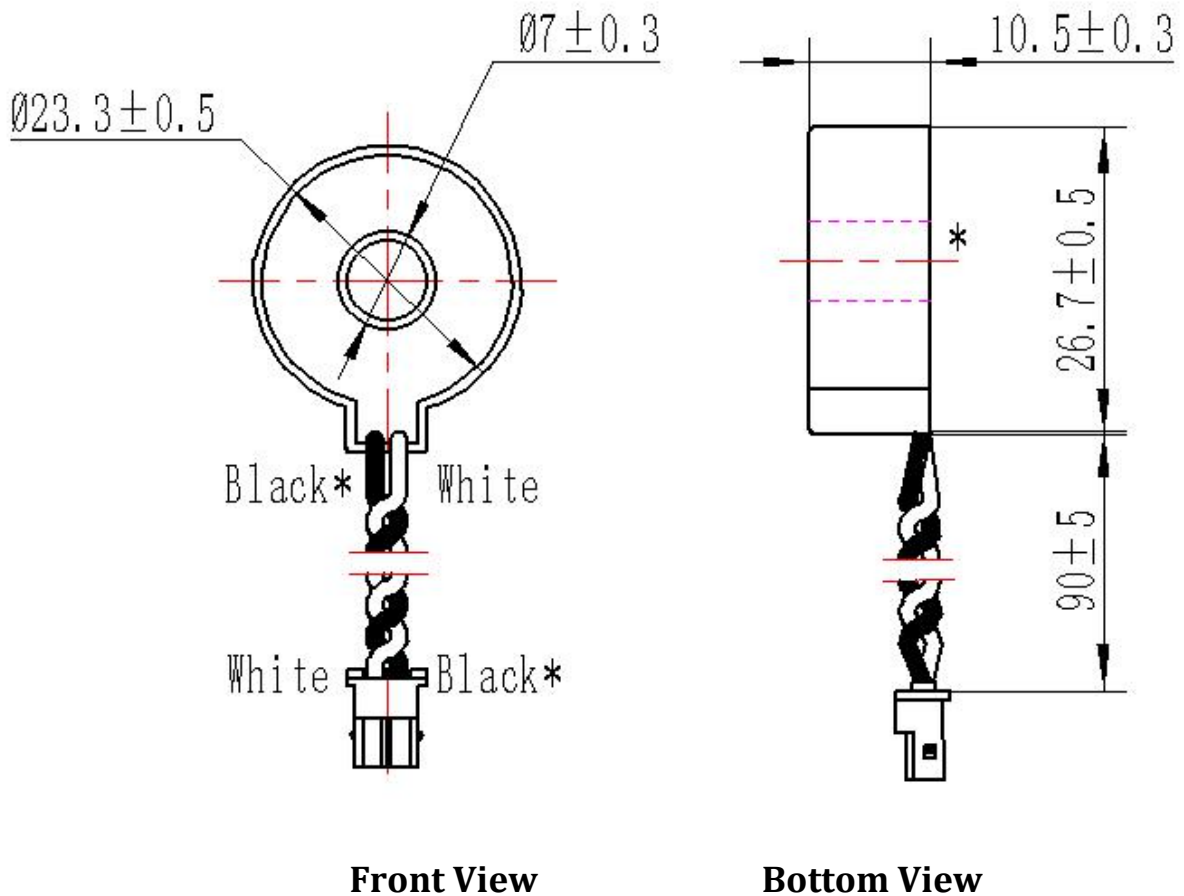


# ZMCT183 Current transformer

Small size, high accuracy, good consistency, for power measurement and protection

## Structural parameter:



**Unit: mm**

**Connector: Molex 5264**

**The main technical parameter:**

Model	ZMCT183
input current	0-80A(10Ω)
Rated output current	2mA at 5A
turns ratio	2500:1
phase angle error (rated input)	≤12' (5A input, sampling resistor 10Ω)
linearity	0.1%(5% ~120% of 5A)
Ratio error	-0.1%≤f≤+0.1% (5A input, sampling resistor 10Ω)
isolation voltage	4500V
application	Measurement or protection
Encapsulation	Black Epoxy
installation	Flying wire type
operating temperature	-40℃~+85℃

Direction for use:

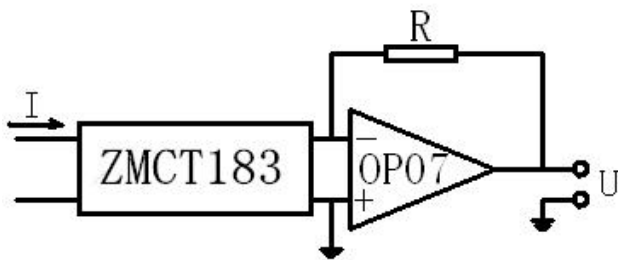
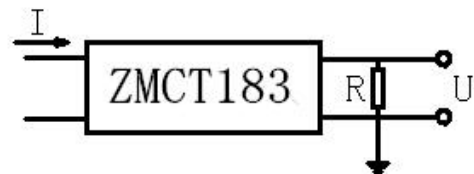


Figure I



$$U = \frac{I}{2500} \cdot R$$

I: input current  
R: sampling resistor  
U: sampling voltage

Figure II

1. The typical usage of the product is for the active output (Figure I). R is a sampling resistor, c and r is used for phase compensation.
2. The product can be directly through the resistance sampling, easy to use (Figure II).
3. The instructions are for reference only, specific parameter is subject to specifications (acknowledgment).