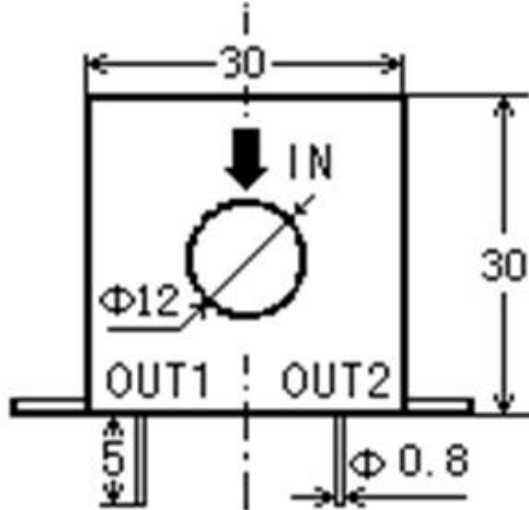


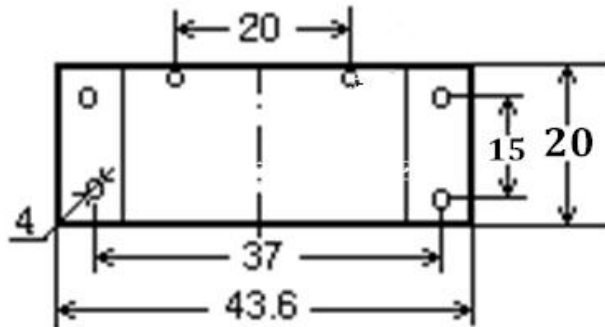
# ZMCT162 Current Transformer

Small size, high accuracy, good consistency, for current and power measurement

## Structural parameters:



Front view

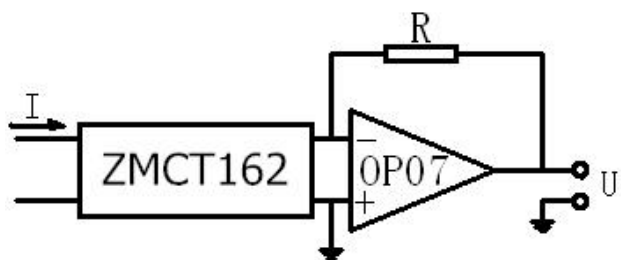


Bottom view

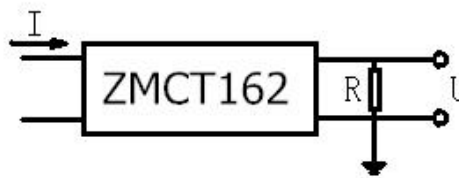
## The main technical parameters :

Model	ZMCT162
Rated input current	250A
Rated output current	125mA
turns ratio	2000:1
phase angle error	≤30' (input 10A, sampling resistor 10Ω)
Current range	0~250A (sampling resistor 10Ω)
linearity	≤0.1% (5%dot~120%dot)
Permissible error	-0.2% ≤ f ≤ +0.2% (input 10A, sampling resistor 10Ω)
isolation voltage	4500V
application	current and power measurement
Encapsulation	Epoxy
installation	Screw mounting
operating temperature	-40°C~+85°C

Direction for use:



**Figure I**



$$U = \frac{I}{2000} \cdot R$$

I: input current  
R: sampling resistor  
U: sampling voltage

**Figure II**

1. ZMCT162 used for measurement. Typical usage is shown in Figure 1 and Figure 2. R is a sampling resistor.