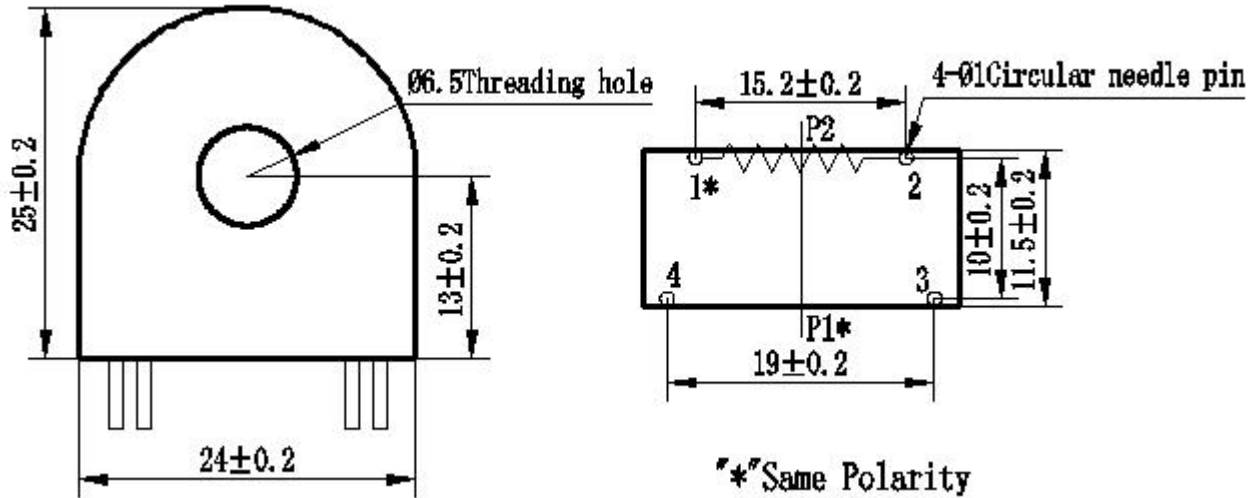


# ZMCT116A Current Transformer

Small size, high accuracy, good consistency, for current and power measurement

## Structural parameters:



Remarks: Primary input: straight- through type( make the measured circuit be through the hole)  
Secondary output: 1、 2pin empty pins: 3、 4pin

Front view

Bottom view

## The main technical parameters:

Model	ZMCT116A
input current	0~70A (100Ω)
Rated output current	2mA at 5A
turns ratio	2500:1
phase angle error	≤20' (input 1A, sampling resistor 100Ω)
current range	0~70A (sampling resistor 100Ω)
linearity	0.1% (5%dot~120%dot)
Permissible error	-0.2%≤f≤+0.2% (input 1A, sampling resistor 100Ω)
isolation voltage	4500V
application	current and power measurement
Encapsulation	Epoxy
installation	PCB mounting (Pin Length>3mm)
operating temperature	-40℃~+85℃

Direction for use:

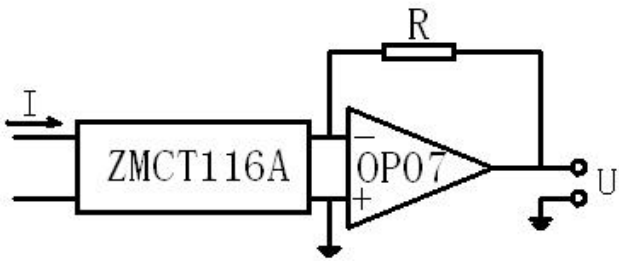
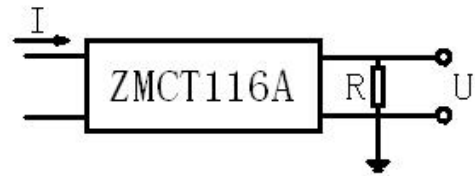


Figure I



$$U = \frac{I}{2500} \cdot R$$

I: input current  
R: sampling resistor  
U: sampling voltage

Figure II

1. ZMCT116A used for measurement. Typical usage is shown in Figure 1 and Figure 2. R is a sampling resistor.
2. Empty pin can not be grounded.