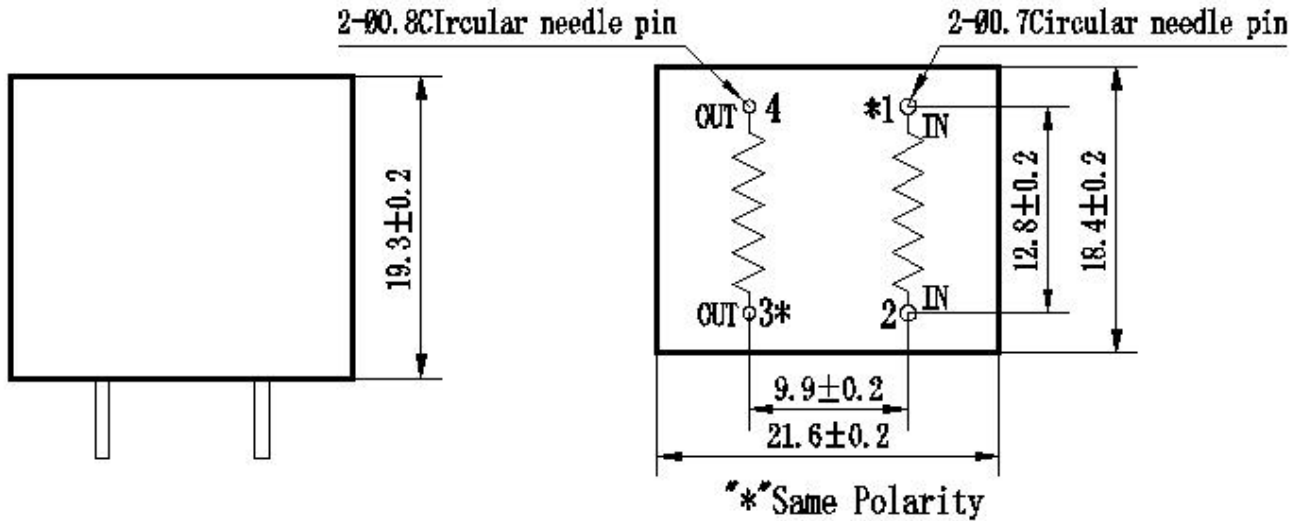


ZMCT115S Current Transformer

Small size, high accuracy, good consistency, for accurate current and power measurement

Structural parameters:



Front view

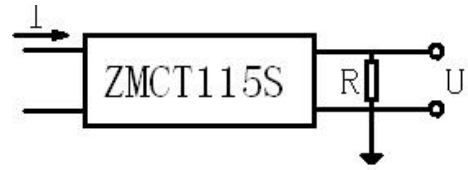
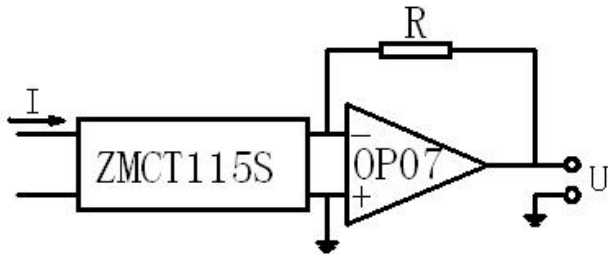
fine needle: input, thick needle: output

Bottom view

The main technical parameters:

Model	ZMCT115S
input current	0~15A (sampling resistor 13Ω)
Rated output current	2.5mA at input 1A
turns ratio	400:1
phase angle error	≤20' (input 1A, sampling resistor 13Ω)
Accuracy class	0.2
linearity	≤0.2% (5%dot~120%dot)
Permissible error	-0.2%≤ f ≤+0.2% (input 1A, sampling resistor 13Ω)
isolation voltage	3000V
application	Precise current and power measurement
Encapsulation	Epoxy
installation	PCB mounting (pin length>3mm)
operating temperature	-40℃~+70℃

Direction for use:



$$U = \frac{I}{400} \cdot R$$

I: input current

R: sampling resistor

U: sampling voltage

Figure I

Figure II

1. The typical usage of the product is for the active output (Figure I). R is a sampling resistor.
2. The product can be directly through the resistance sampling , easy to use (figure II).